

**THE ALL NEW MODEL
IN PLYWOODS**

evergreen plywood

ABSOLUTELY GOOD-NATURED



COMPANY

EG Ply was founded in the year 1999, by a group of businessmen with extensive relevant experience, under the name Evergreen Plywood. Eventually, EG Ply has been flourishing, gathering customer satisfaction through unmatched quality, and durability of the compressed hardwood. The ISO 9001-2008 certified company has been conferred the coveted ISI certification by the Government of India.

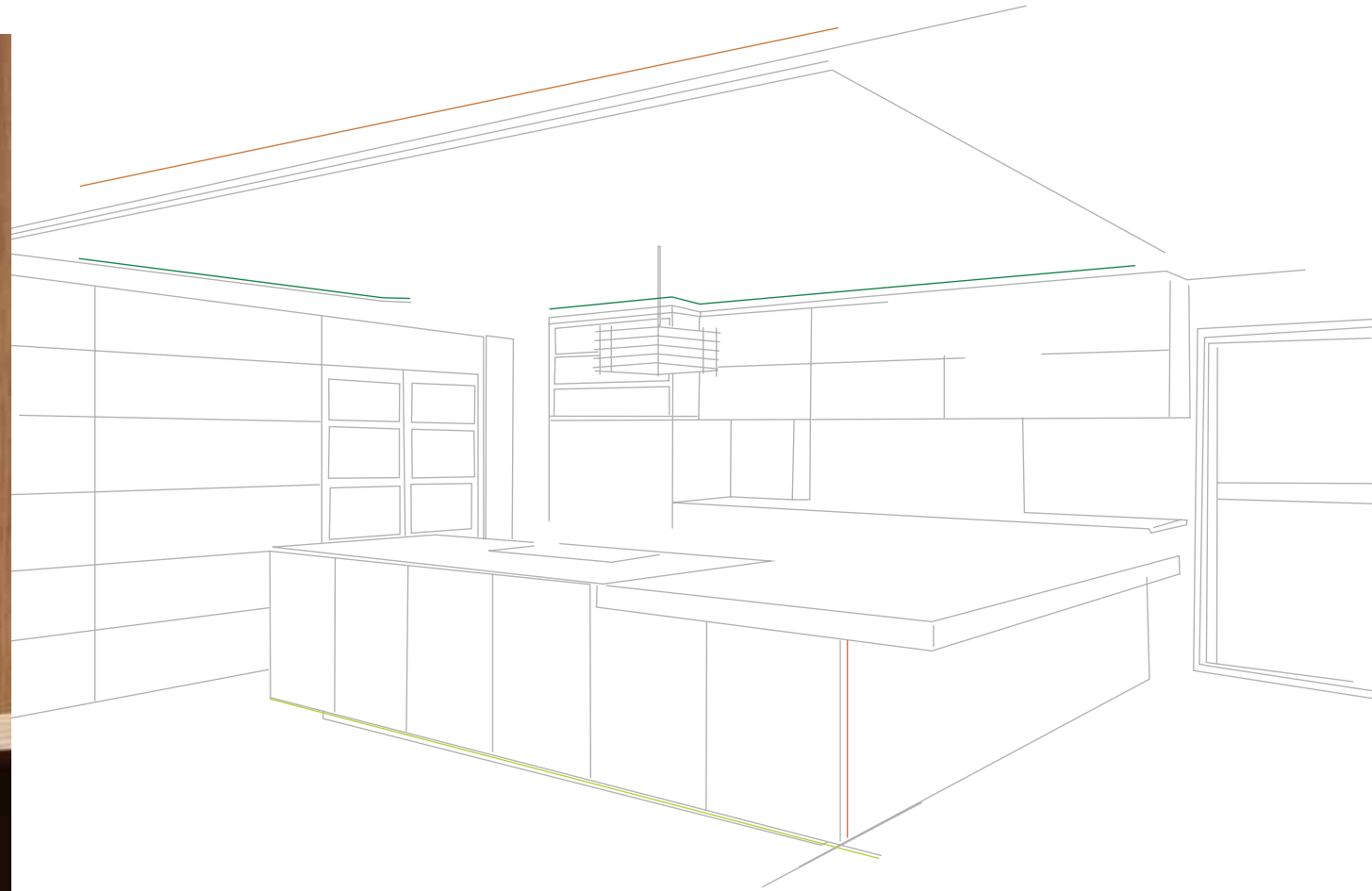
Now, EG Ply has become one of the most influential names in plywood segment of Kerala, as it conforms to the international and environment friendly norms. With its network spread across India, the company partners most eminent distributors.

MISSION

To provide best quality, price and service to the consumers. To continuously upgrade the product through research and development and technology innovations

VISION

To become the best plywood manufacturers in India and thereby gain international reputation



WHAT IS EG Ply

EG Ply, the versatile, ready to use treated plywood, is one of the quality manufacturers of durable plywoods. The hardwood chosen for the stringent compression process is that of first quality. The seasoned hardwood is glued and compressed under high pressure and core bonded with high quality resin.

With the fully developed in-house research lab, the stringent supervision, and the consistent quality policies, EG Ply is able to give a credible warranty to its products.



WHY EG Ply

- Ideal for hot & humid tropical climate
- Temperate resistance to fire & water
- Retains originality
- Seasoned high quality Hardwood
- Core bonded with special quality resin

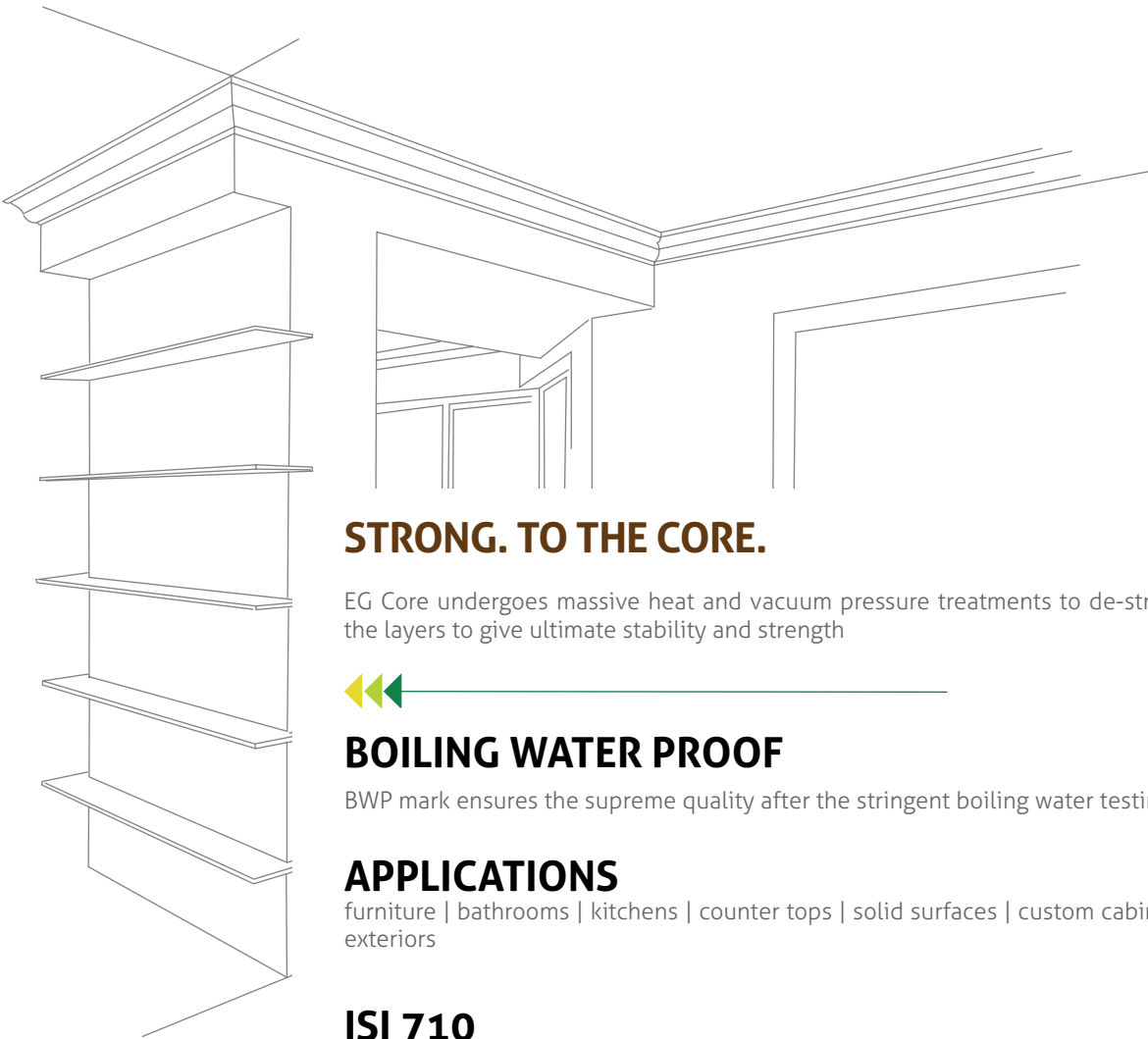


STRONG TO THE CORE. WITH PURE GURJAN LAYERS

The utmost durability, the stunning appearance and the attractive grains take EG CORE to the peak of strength. With its greater dimensional stability, structural ability and resistance to chemicals, It makes an ideal substitute to wood for heavy use in tropical climates. EG CORE undergoes massive heat and vacuum treatments to de-stress the layers to give ultimate strength and stability, ensuring credible warranty.

100% PURE SINGLE GRADE GURJAN WOOD

Gurjan is an oily hardwood available only in Burma, that grows straight. It has very attractive grains and its fibres are straight, compact, hard, strong, heavy and smooth. Gurjan, with the stunning appearance and utmost durability of this strong wood, is ideal for heavy use in tropical climate. It has greater dimensional stability, structural ability and resistance to chemicals. This is widely used in exterior plywoods and hence named as marine plywood.



STRONG. TO THE CORE.

EG Core undergoes massive heat and vacuum pressure treatments to de-stress the layers to give ultimate stability and strength



BOILING WATER PROOF

BWP mark ensures the supreme quality after the stringent boiling water testing.

APPLICATIONS

furniture | bathrooms | kitchens | counter tops | solid surfaces | custom cabinets | exteriors

ISI 710

EG Core is certified by the bureau of Indian standards taking into consideration the moisture content, shearing strength and tensile strength

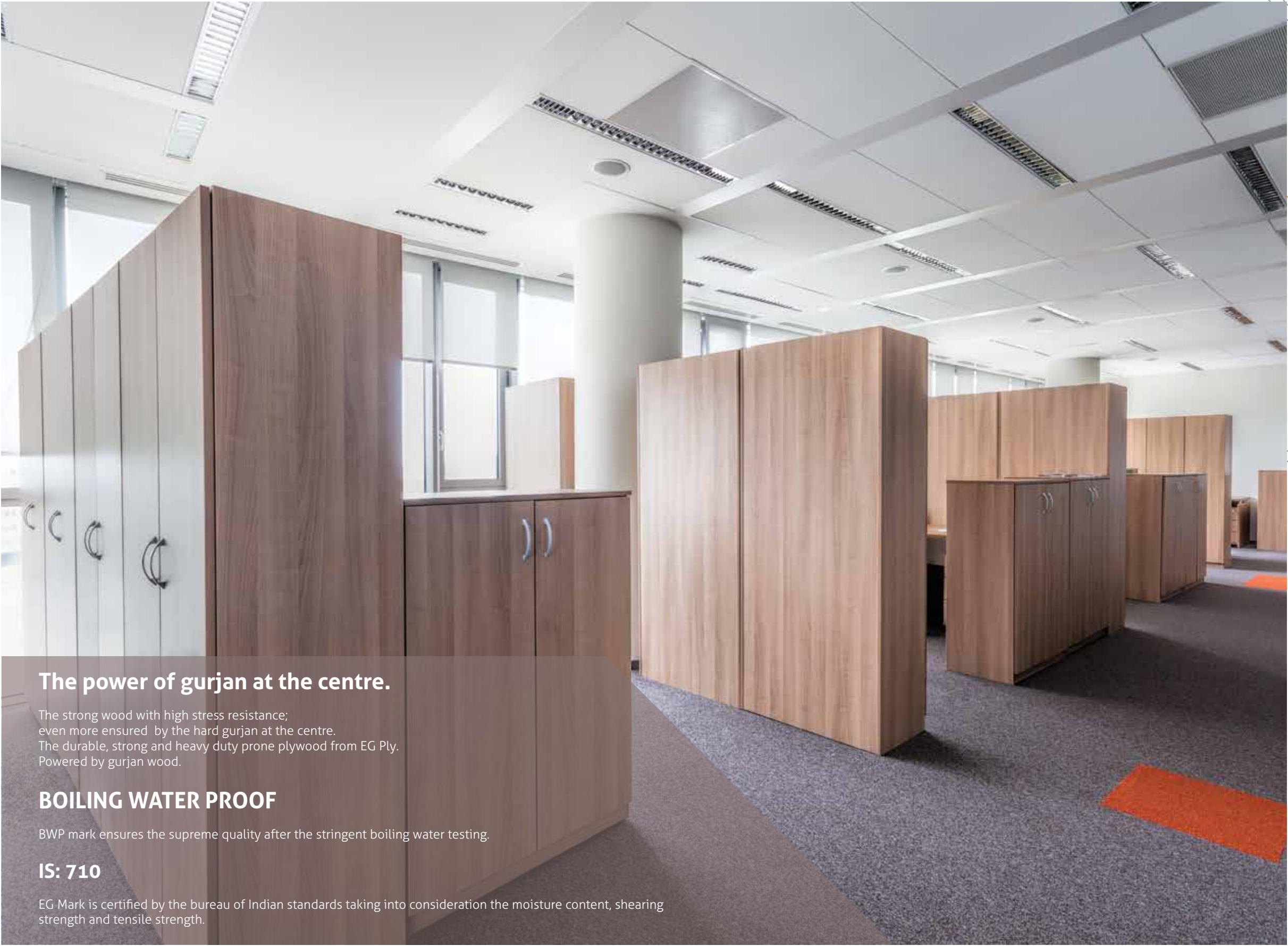
TECHNICAL SPECIFICATION

S. No.	Test	ISI Requirement Results
1	Moisture Content	Min. 784.5 N 1120 N Min. 980.7 N 1300 N
2	Glue Sheer Strength in dry condition average	5-15% 7.2%
3	Glue Sheer Strength after wet condition Individual average	Min. 1078.7 N 21450 N Min. 1323.9 N 1700 N
4	Glue Sheer Stength in mycological test Individual average	Min. 784.5 N 1250 N Min. 980.7 N 1420 N
5	Tensile Strength parallel to grain direction Right angle to grain direction Sum of both directions	Min. 420 kgf./cm2 645 kgf./cm2 Min. 250 kgf./cm2 395 kgf./cm2 Min. 845 kgf./cm2 1040 kgf./cm2

ISO 9001-2015 Certified Company



**EG
CORE**
pure gurjan wood



The power of gurjan at the centre.

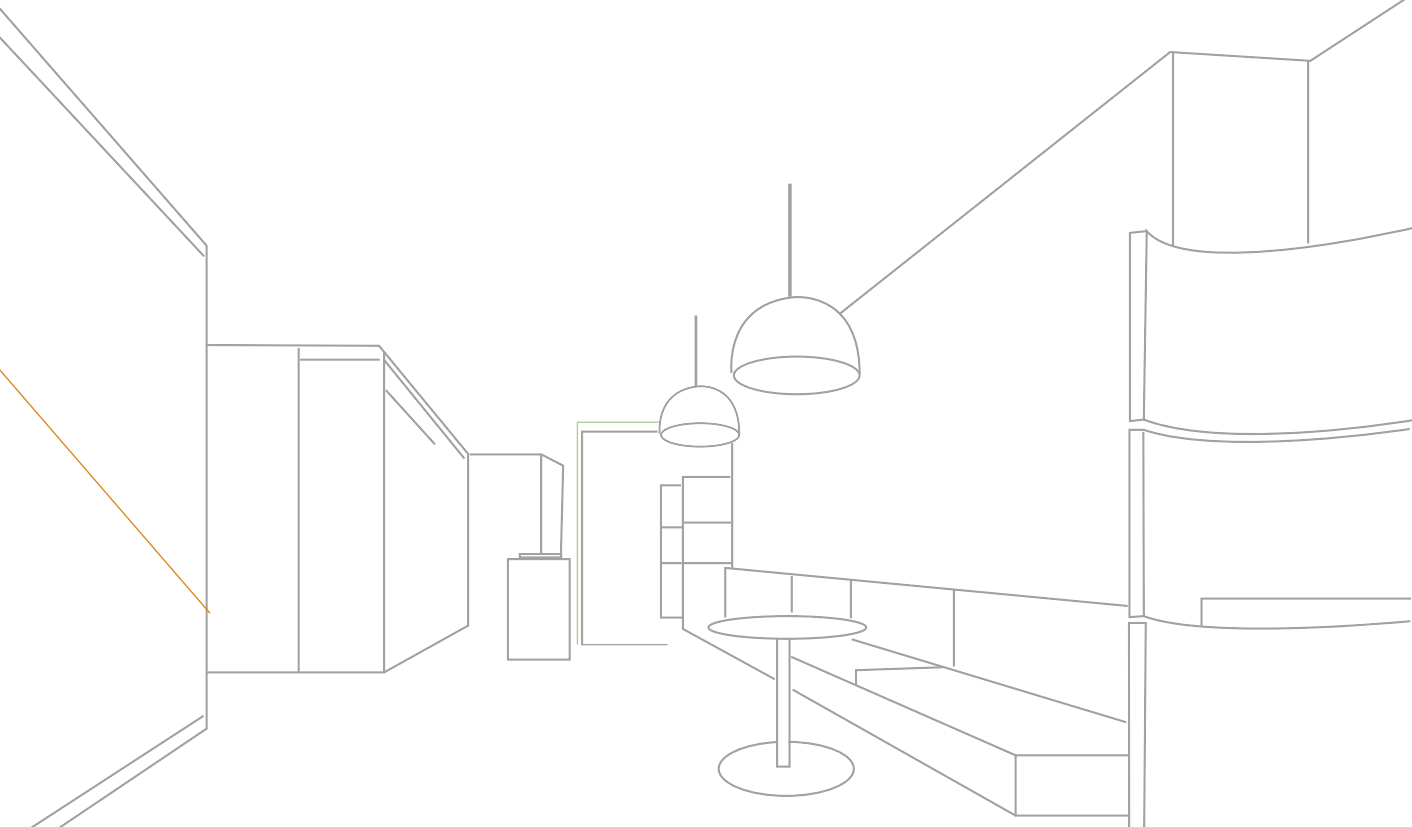
The strong wood with high stress resistance; even more ensured by the hard gurjan at the centre. The durable, strong and heavy duty prone plywood from EG Ply. Powered by gurjan wood.

BOILING WATER PROOF

BWP mark ensures the supreme quality after the stringent boiling water testing.

IS: 710

EG Mark is certified by the bureau of Indian standards taking into consideration the moisture content, shearing strength and tensile strength.



Technical specifications		IS: 710 Grade: BWP
S. No	Test	IS Requirement Results
1	Glue shear strength water resistant	9.1.3.1
2	Moisture content test	9.1.1
3	Adhesion of plies water resistant	9.1.5
4	Glue shear strength dry state	9.1.2.1
5	Adhesion of plies dry state	9.1.2.2
6	Tensile strength	9.1.4

THE POWER OF GURJAN AT THE CENTRE





THE SPARK OF SOLID PLYWOOD

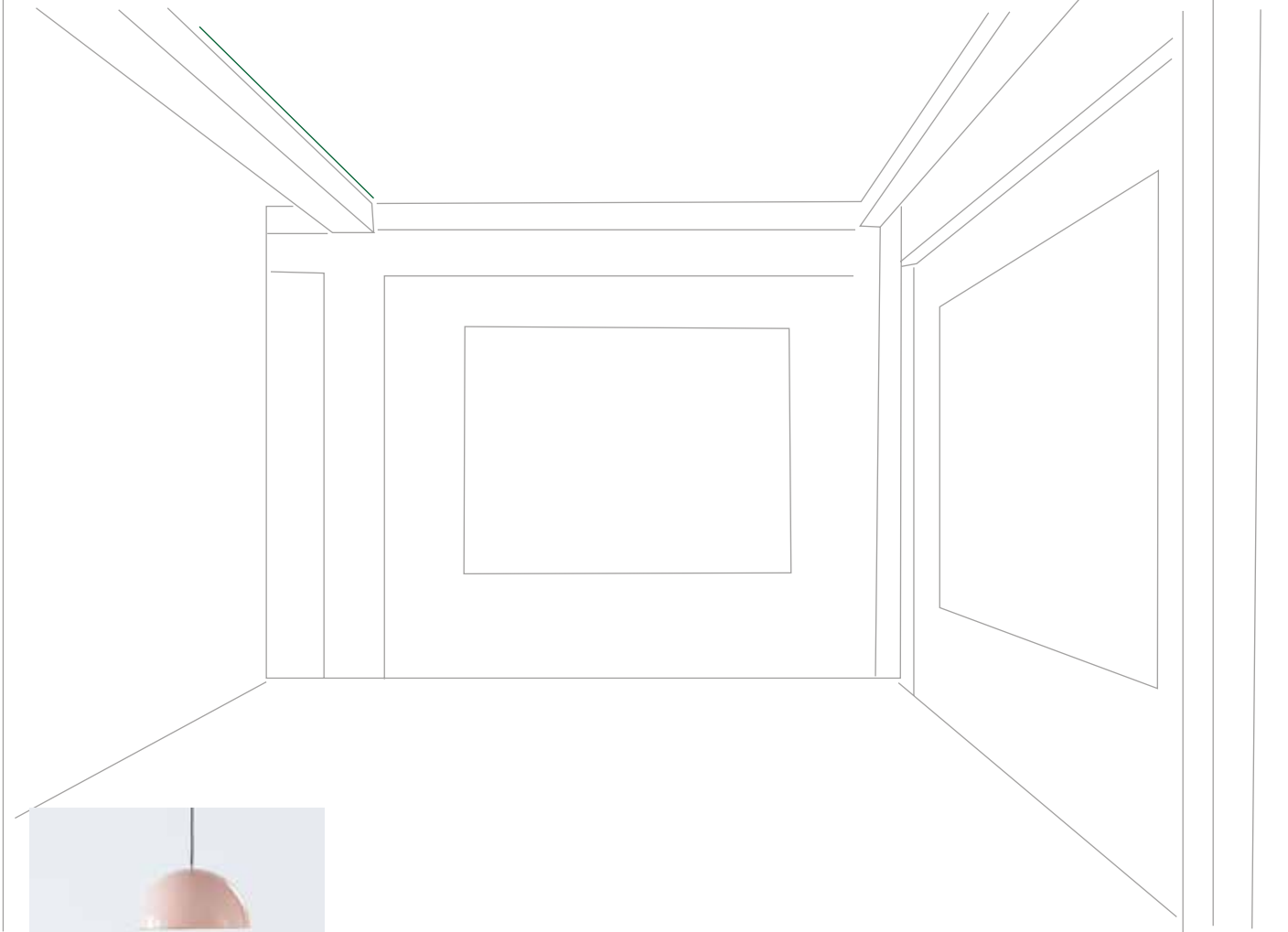
The 'rock-solid' EG Rock is built from selected hardwood timber. This gurjan mix plywood is given chemical treatment in vacuum pressure impregnation process. It is bonded with undiluted Phenol-Formaldehyde Resins that are processed through high temperature and pressure. The result is a BWP plywood that is highly resistant to attacks from all types of microorganisms and extreme weather conditions - an IS 710 BWP EG Rock.

BWP
GRADE

BWP mark ensures the supreme quality of the stringent boiling water testing.

IS: 710

The moisture resistance, shearing strength & tensile strength of EG Rock adhere to the strict Indian Standards.



TECHNICAL SPECIFICATION

Technical specifications		IS: 710 Grade: BWP
S. No	Test	IS Requirement Results
1	Glue shear strength water resistant	9.1.3.1
2	Moisture content test	9.1.1
3	Adhesion of plies water resistant	9.1.5
4	Glue shear strength dry state	9.1.2.1
5	Adhesion of plies dry state	9.1.2.2
6	Tensile strength	9.1.4





THE SPACE ENHANCER.

The smoothly finished plywood stays unaffected by stress and strain. It handles heavy duty job. The remarkable bond of the phenol formaldehyde resins makes it one of the most powerful all-purpose plywoods.

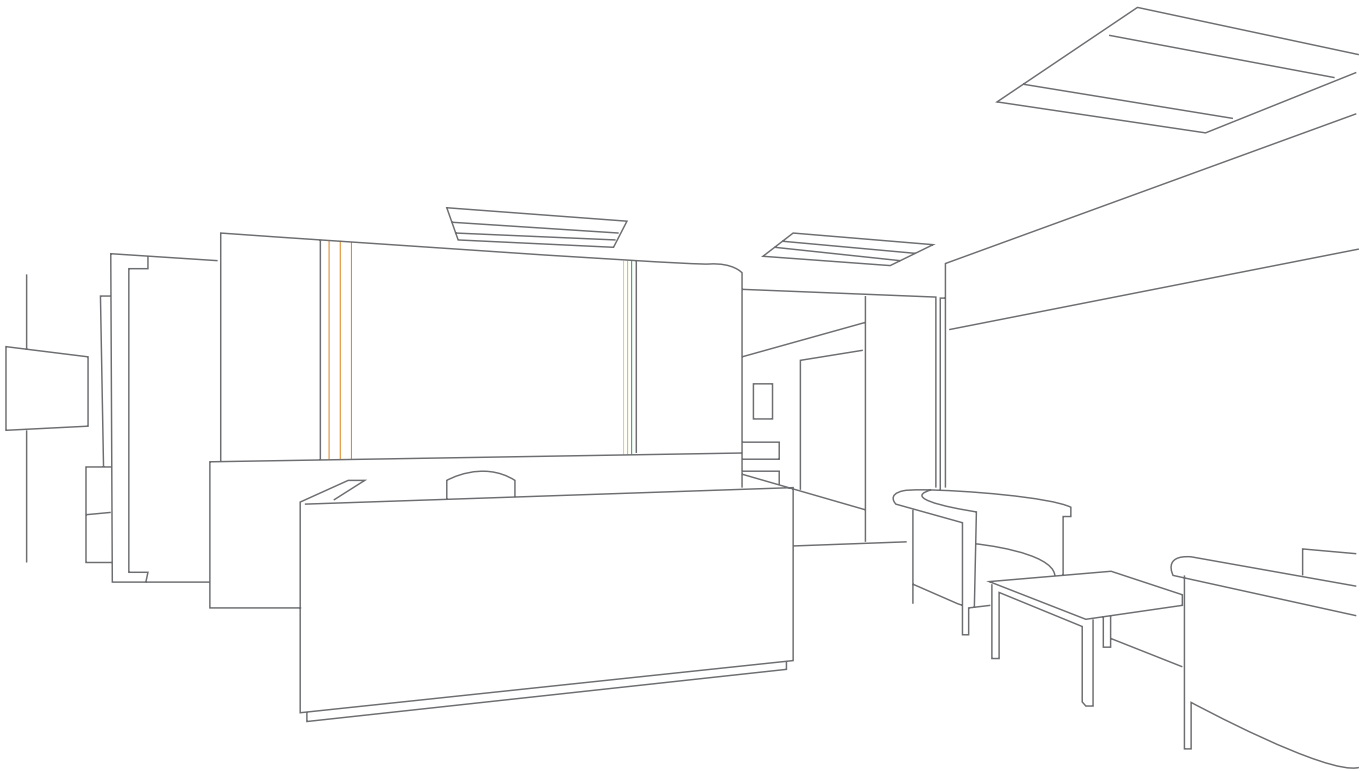
BWP

GRADE

IS: 710

BWP mark ensures the supreme quality of the stringent boiling water testing.

The moisture resistance, shearing strength & tensile strength of EG Bond adhere to the strict Indian Standards.



TECHNICAL SPECIFICATION

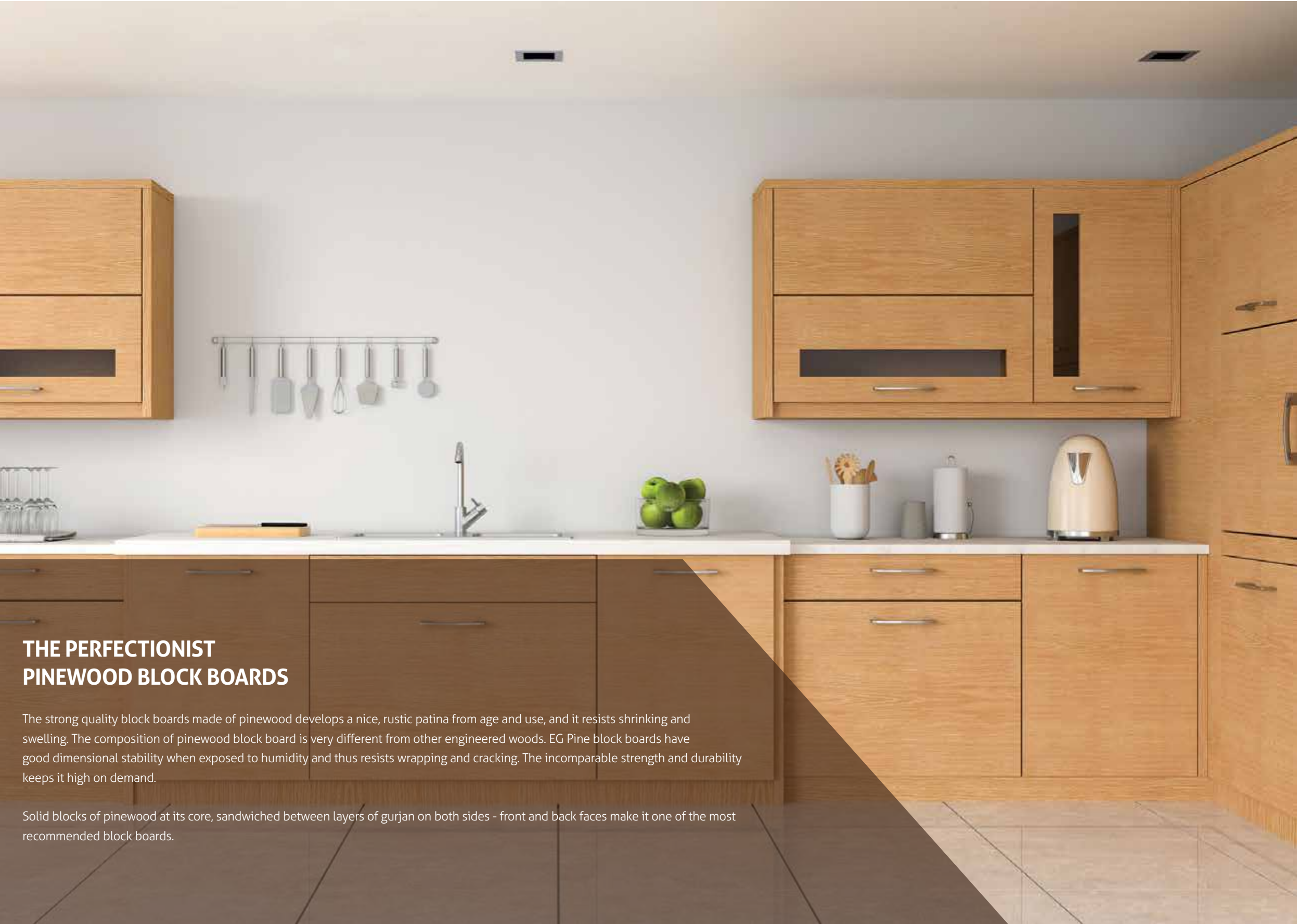
Technical specifications		IS: 710 Grade: BWP
S. No	Test	IS Requirement Results
1	Glue shear strength water resistant	9.1.3.1
2	Moisture content test	9.1.1
3	Adhesion of plies water resistant	9.1.5
4	Glue shear strength dry state	9.1.2.1
5	Adhesion of plies dry state	9.1.2.2
6	Tensile strength	9.1.4



ISO 9001-2000 Certified Company

BWP
GRADE





THE PERFECTIONIST PINWOOD BLOCK BOARDS

The strong quality block boards made of pinewood develops a nice, rustic patina from age and use, and it resists shrinking and swelling. The composition of pinewood block board is very different from other engineered woods. EG Pine block boards have good dimensional stability when exposed to humidity and thus resists warping and cracking. The incomparable strength and durability keeps it high on demand.

Solid blocks of pinewood at its core, sandwiched between layers of gurjan on both sides - front and back faces make it one of the most recommended block boards.



TECHNICAL SPECIFICATION

SL NO	TEST	PRESCRIBED VALUE	RESULT
1	DIMENSIONS, MM a.length b.width c.thicknes	Tolerance +6mm -0mm +3mm -0mm +-5%	
2	Squareness, %	0.2	2442
3	Edge Straightness, %	0.2	1220
4	Moisture Content, %	5 – 15%	
5	Resistance to water, three test specimens submerged in water at 100 +-20C for 71 hours	Min. Pass Standard	19.24
6	MoE, N/mm2 a. average b. minimum	5000 4200	0.11
7	MoR, N/mm2 a. average b. minimum	50 40	0.12
8	Spot Test	Average	9%
9	Workmanship and Finish	Minimum	Excellent

TEST REPORT OF BLOCK BOARD (AS PER IS 1659 – 2004) GRADE: BWP

ISO 9001-2000 Certified Company

BWP
GRADE

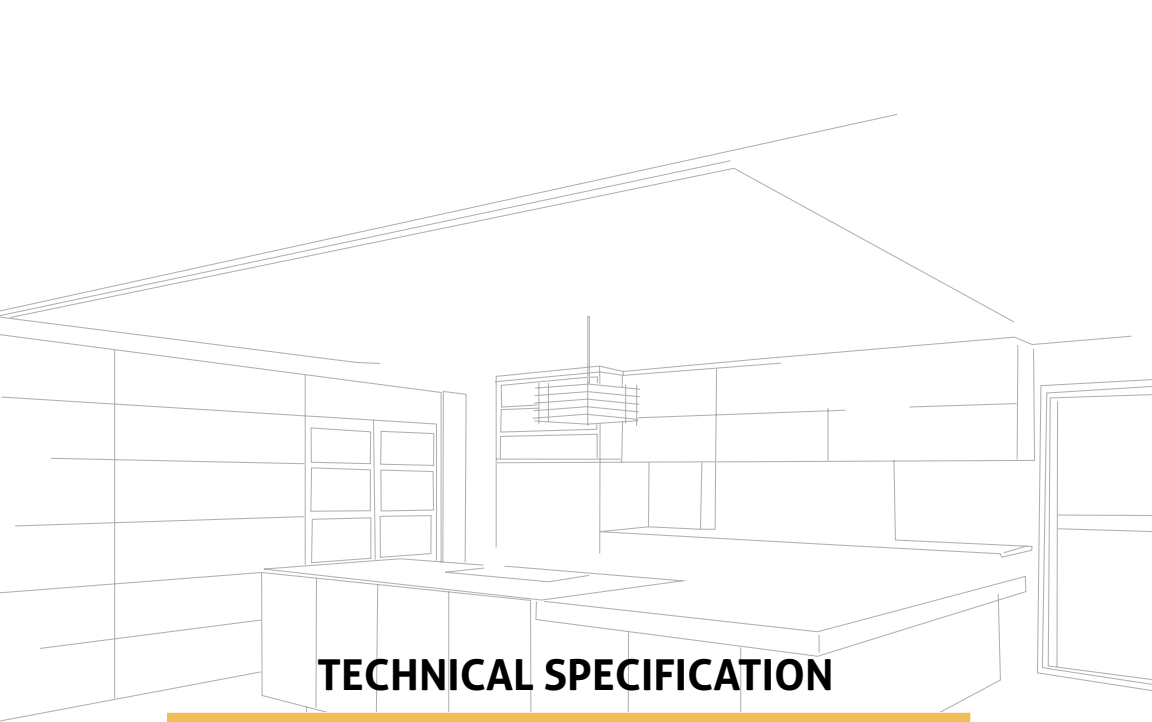




TRUSTED PVC FOAM BOARD

The eco-friendly PVC Foam Boards are in great demand in the market for its reliable and versatile quality. EG Crust, a product from the house of EG Ply has been developed through an integrated quality assurance approach to bestow best possible product.

EG Crust is 100% termite proof and water proof. It possesses extremely good tensile strength and is available in different dimensions and serves different purposes.



TECHNICAL SPECIFICATION

CONTENT DETAILS	TEST REPORT
PVC (Polyvinyl Chloride)	58%
Calcium Power	25%
Foaming Agent	7%
Other Auxiliary Material	10%
FEATURES	
Water Saturation	< 1%
Tensile Strength	≈ 12
Elongation at Break	≈ 12%
Vicat Softening	≈ 76% °C
Impact Strength	16KL/M2
Flexural Modulus of Elasticity	≈ 900MPa
Bending Strength	≈ 24Mpa
Lift Span	> 50 years
Flame Retardance	Self-Extinguish
Screw Holding Capacity	≈ 900N

APPLICATIONS

Suitable for both indoor & outdoor purposes

- Residential furniture
- Office furniture
- Shuttering for concrete work
- Partition & paneling
- Wall cladding etc.





FOR SMOOTH AND STRONG
CONCRETE SETTING

40% COST SAVING REUSABLE MINIMUM
12-15 TIMES WHEN USED CONTINUOUSLY

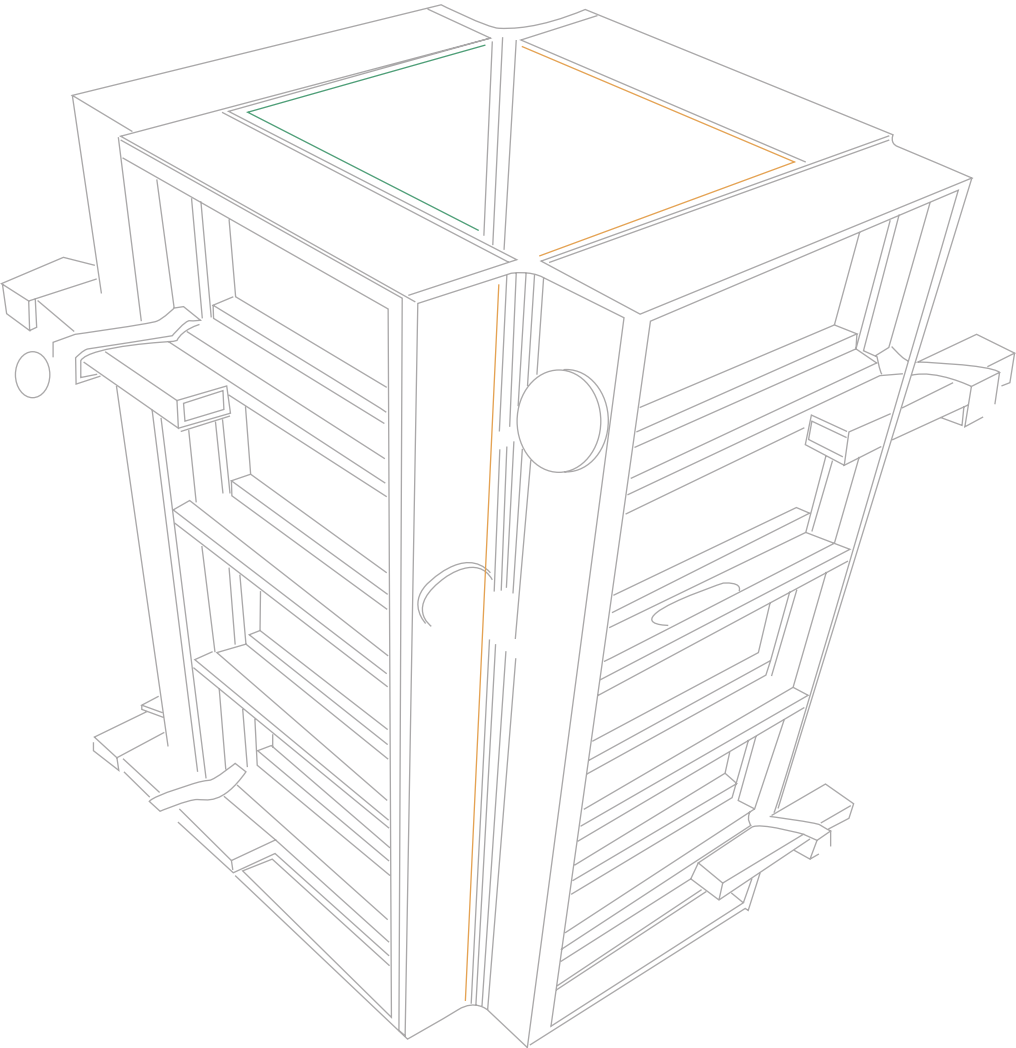
Shuttering plywood is used mostly in the construction industry to contain concrete while it sets. It is used to make strong and sleek shuttering boxes that give evenly smooth finish to the concrete.

STRENGTH . STABILITY . RESILIENCE . RESISTANCE

APPLICATIONS : As shuttering boxes in construction industry

- Ideal replacement for conventional wood and metal shuttering
- Best for shuttering and centering work in the construction of buildings, dams, bridges, beams, roofing, etc.
- Premium quality, high density - 30 kg
- High solid content in resin
- Heavy load capacity, especially for pouring concrete
- Sustains alternate wetting & drying
- Bonded with phenol formaldehyde resins

EG SHUTTERING PLY



MECHANICAL STRENGTH PROPERTIES

Moduls of Rupture (Kg/cm2)	9mm	12mm	19mm
Parallel to face grain	650	600	600
Perpendicular to face grain	450	500	500
Tensile Strength (KG/CM)			
Parallel to face grain	425	400	375
Perpendicular to face grain	325	350	375



ISO 9001-2000 Certified Company

BWP
GRADE



EG BWR GRADE

Today's world demands rough and tough combinations. That is where the Boiling Water Resistant Plywood comes into power. The dimensional accuracy, the extra sturdiness, boiling water, heat and high temperature resistance are the major characteristics that set EG BWR apart from the rest.

EG BWR is made from 100% hardwood. The properties such as termite resistance and borer resistance ensure stability and durability which makes it the most recommended for furniture manufacturers. Home uses such as exterior panelling, kitchen cabinets, bathroom panelling are given the best justice as well.

Fine Finish with excellent heat & water resistance. Excellent for exteriors, kitchens and bathrooms.

Unmatched appearance. Rough & Tough.

THE CERTIFIED PLYWOOD

POWDER PROOF

Termite & Borer resistant due to the most advanced Glue Line Protection (GLP)

CORE BONDING

Pre-press Calibration Technology (PCT)
Components like the base and face are calibrated and cold-pressed on high-tech machines before undergoing high-density bonding

BOILING WATER RESISTANT

Due to the treatment with Phenol Bonded Resin

EG PLY ADVANTAGES

- Full panel core
- Machine dried
- 100% chemically treated with cover vinegar
- Melamine bonded
- Durability credibility

VACUUM PRESSURE TREATMENT

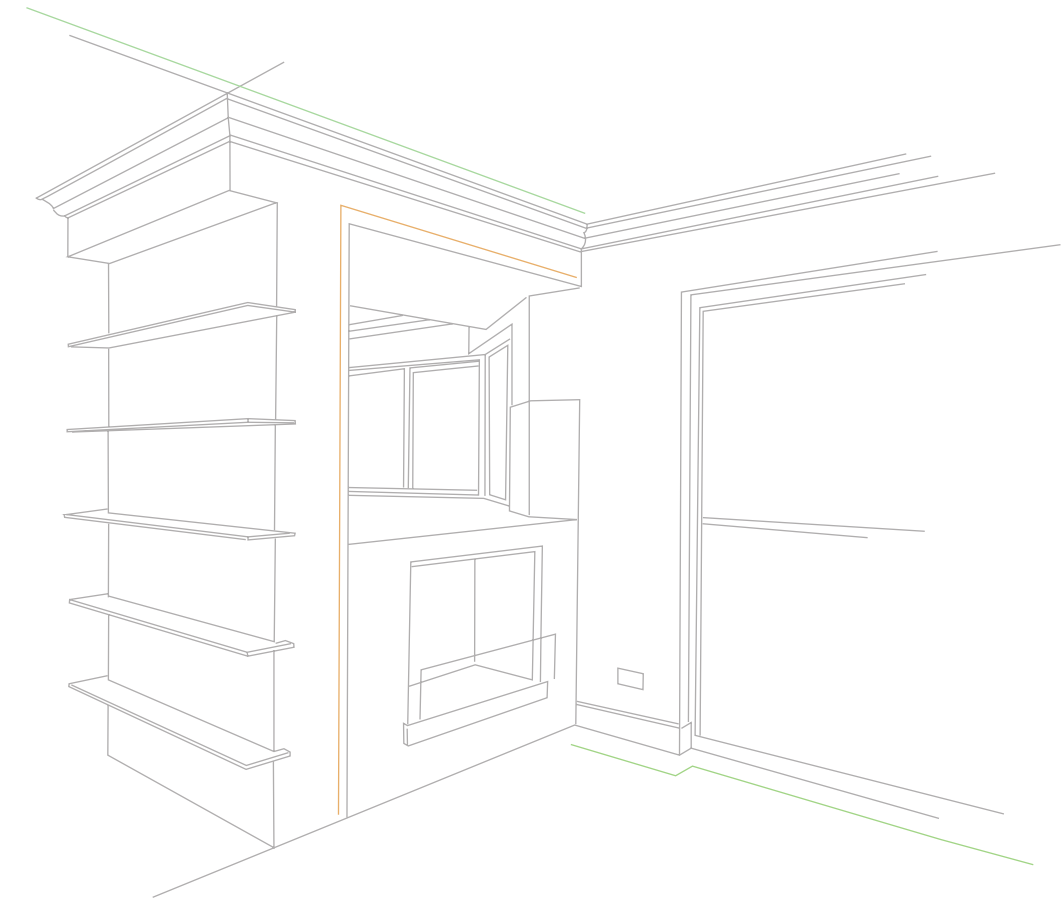
This pressure treatment process ensures durability: in which a high quality aqueous solutions is applied using a vacuum and pressure cycle, before drying

EG PLY WITHSTANDS

Excess load • Trust • Vibrations

PROTECTO COATING

Protecto is an advanced hybrid acrylic polymer blended coating that is both flexible and breathable. It holds to an astounding bond with the plywood when compressed under heat and pressure.



TECHNICAL DETAILS - BWR GRADE PLYWOOD

Moisture Content	8 to 10%
Resistance to micro-organism	Excellent
Resistance to Water (Cyclic test)	Excellent
Modulus of Elasticity (Along the Grain)	5600 N/MM2
Moudulus of Rupture (Along the Grain)	50 N/MM2
Modulus of Elasticity (Across the Grain)	4000 N/MM2
Modulus of Rupture (Across the Grain)	60 N/MM2



ISO 9001-2008 Certified Company

**BWR
GRADE**





EG MR

A tropical climate receives rain and shine consecutively. Ordinary wood and regular plywoods have the tendency to swell or delaminate under such conditions. EG Moisture Resistant is specially engineered to perfection with high compressed materials that reduce water absorption.

EG MR contains advanced resins that react chemically with moisture in the wood; which create a highly moisture resistant material. At EG each every wood strand is coated with such resins, even along freshly cut edges. The long term storage or the exposure to the elements of nature do not affect the EG MR, since even the edges are coated with melamin formaldehyde resins.

Bonded with melamin formaldehyde resins. Best for interiors, home furnishings and furniture.

Lasts Longer. No Swell. No Delamination.

DOORS • CABINETS • WALLS • FURNITURE



MOISTURE RESISTANT

Due to the high quality core bonding with Urea Formaldehyde Resin

TECHNICAL DETAILS - MR GRADE PLYWOOD

Moisture Content	8 to 10%
Resistance to micro-organism	Excellent
Resistance to Water (Cyclic test)	Excellent
Modulus of Elasticity (Along the Grain)	4800 N/MM2
Moudulus of Rupture (Along the Grain)	40 N/MM2
Modulus of Elasticity (Across the Grain)	3000 N/MM2
Modulus of Rupture (Across the Grain)	50 N/MM2

ISO 9001-2008 Certified Company

MR
GRADE



VITO PLY DIPPING GRADE

WEATHER PROOF. IDEAL FOR HUMID SEA SHORES.

The plywood that fits perfect in to the Coastal area, as it does not swell. Bonded at very high pressure and temperature, with quality Urea formaldehyde resin, confirms the unmatched standard.

With anti-swelling characteristics
Bonded with high pressure
Withholds rigorous climatic conditions

IS: 303

VITO PLY MR GRADE

HIGH QUALITY HARDWOOD.
FOR WALL PANELLING & CEILING.

Moisture is the greatest enemy of wood. The MR grade Vitoply resists the moisture, thereby termites and pests. Bonded with Urea Formaldehyde Resin
Highly resistant to water and humidity



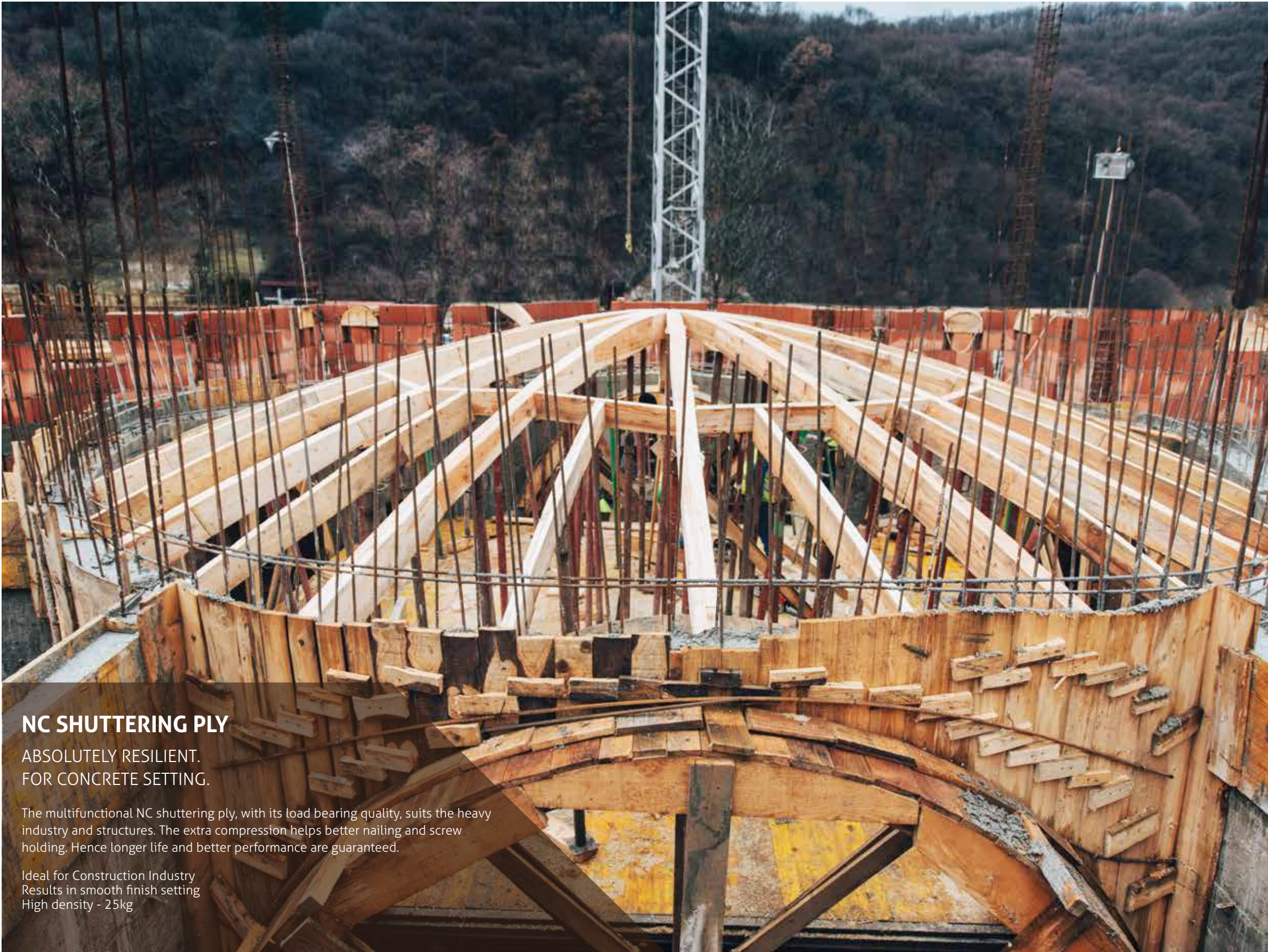
From the House of ®



NC
vitoply
a hardwood within budget



ISO 9001-2008 Certified Company

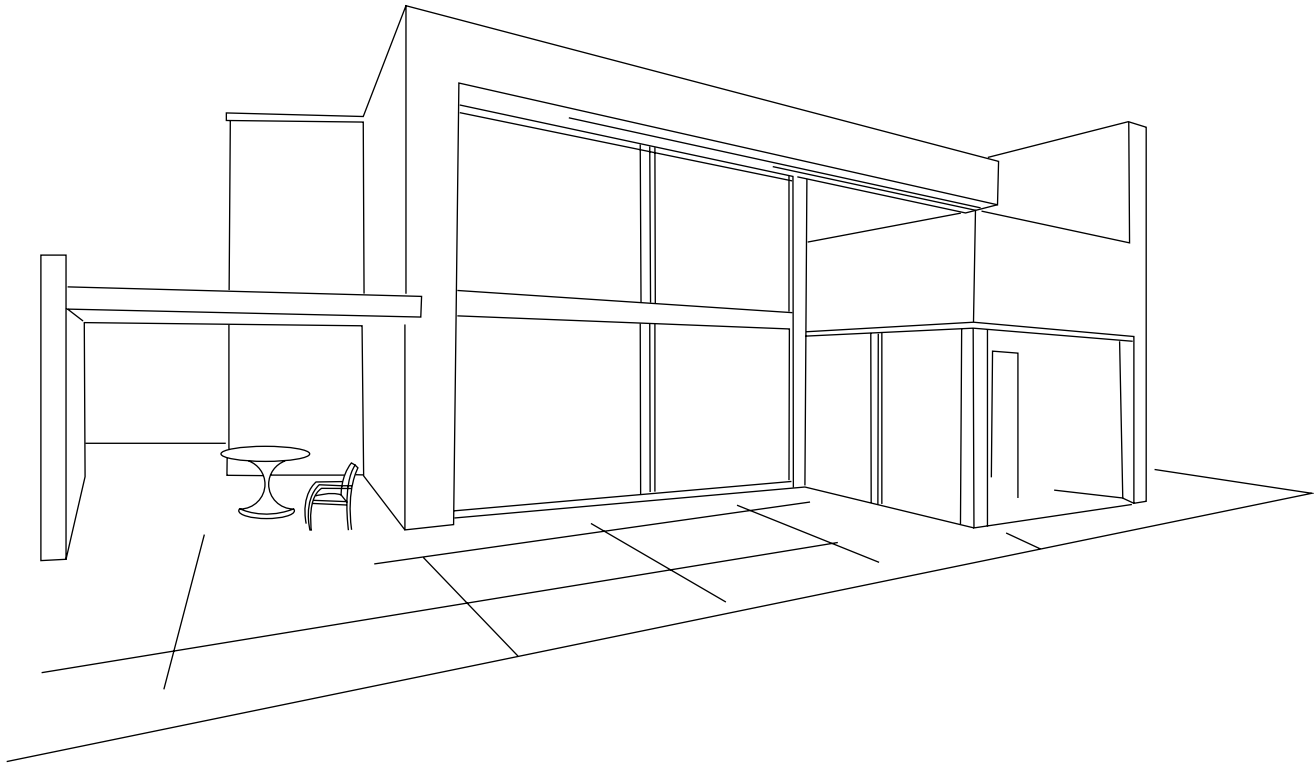


NC SHUTTERING PLY

ABSOLUTELY RESILIENT.
FOR CONCRETE SETTING.

The multifunctional NC shuttering ply, with its load bearing quality, suits the heavy industry and structures. The extra compression helps better nailing and screw holding. Hence longer life and better performance are guaranteed.

Ideal for Construction Industry
Results in smooth finish setting
High density - 25kg



TECHNICAL SPECIFICATION

ISO 9001:2008 CIRTIFIED FILM FACED MR GRADE SHUTTERING PLYWOOD	
CORE VENEER USED 100% TREATED WOOD	
FILM QUALITY: 40/128 GSM, FROM PT. DYNEA MUGI INDONESIA	
SIZE	2440MMX1220MM
THICKNESS	12MM(+/- .5MM)
WEIGHT	25KG(+/- 1KG)
RESIN	MUF RESIN, ADDED 2%MELAMIN, 10%ADDFLOW, 10%FLOUR(MAINDO
PRESSURE WHILE MANUFACTUARING THE PLYWOODS 18KGS/SQ CM APPROXIMATELY	

From the House of ®

BWR
GRADE





**WELL CRAFTED
30MM FLUSH DOORS**

Simple in design.
Smooth in action.

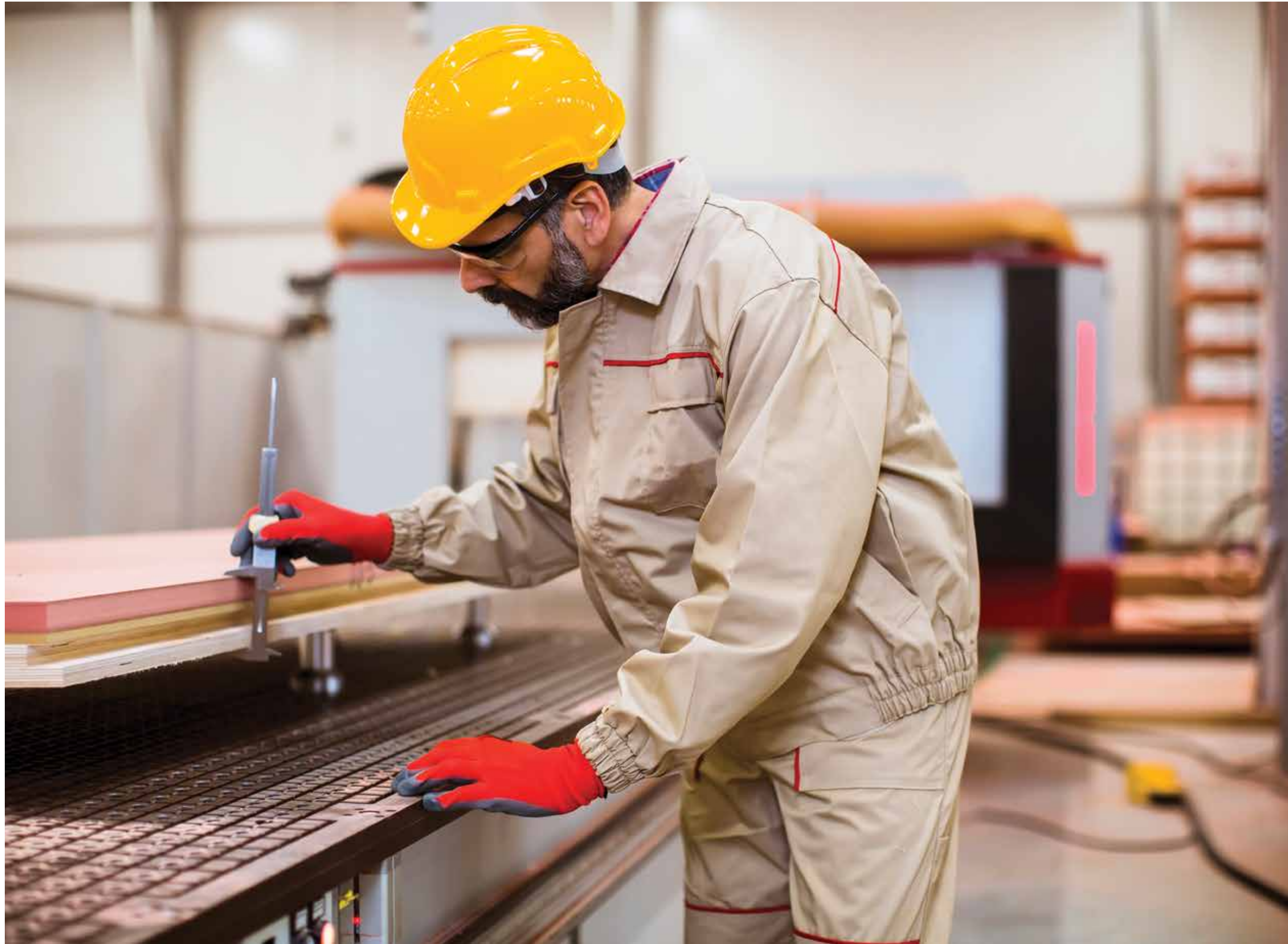
EXCELLENT RESISTANCE CAPACITY

Made from perfectly seasoned prime quality hardwood timber, these flush doors are dimensionally stable, durable and have superior grade boiling water resistance quality.



ISO
9001-2008
Certified Company





QUALITY POLICY

EG Ply had vowed to insure the quality of the products & services offered to our trusted customers. At any drastic situations, we are not ready to make any compromises in this regard.

Being virtuous in our actions, we comply with the relevant laws, policies and regulations deeming for our ethical & quality standards.





EG Environment Care

We are genuinely inclined to preserving and conserving nature.
EG Ply ensures that the wastage of wood is nil in its manufacturing.
EG products are eco-friendly that are based on values of care.
Care towards a better world, better generations.





HOMES



COMMERCIAL



OFFICES

IDEAL FOR ALL INTERIORS



CORPORATE OFFICE

Evergreen Plywoods, 15/515, Parammal,
Azhinhilam P. O, Malappuram Dt.,
Kerala. Pin - 673632
E: egplywood@gmail.com Ph: 04832 831711 / 833711